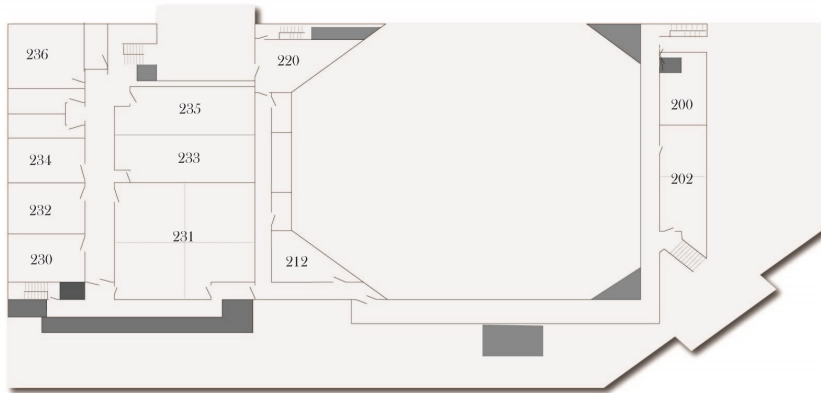


SECOND FLOOR



More Information Contact

**Dr. Blake Ring**  
Pastor of Missions and Small Groups

bring@naobc.org  
(502) 493-3939

Sunday Morning Schedule  
9:00 BFG / Worship  
10:30 BFG / Worship

FALL 2019

**BIBLE FELLOWSHIP GROUPS**  
GROW - KNOW - SHOW - GO



## What is a Bible Fellowship Group?

Bible Fellowship Groups (BFGs) are our small group Bible studies that gather on Sundays. BFGs offer a setting for you to learn about God's Word through an interactive Bible study lesson. They also provide an opportunity for you to develop intimate relationships within a smaller community of believers. Whatever your age or stage of life, there is a BFG for you and every member of your family.

The name "Bible Fellowship Group" was selected because it focuses on two elements that are crucial for a healthy church - the Bible and fellowship. First, BFGs are centered around a Bible study that is applicable for everyday life. You will be given the opportunity to ask questions and learn from others within the group. BFGs are also designed to meet the needs of both new and mature believers. Second, BFGs are geared to foster fellowship by allowing you to spend time connecting with a small group of believers. In this setting, you will find encouragement, friendship, and prayer support.

## When and where do Bible Fellowship Groups gather?

Our BFGs meet on Sunday mornings at 9:00 and 10:30. All of our BFGs gather on our church campus.

## How do I find a Bible Fellowship Group?

There are a number of ways to gain more information about our different BFGs. First, additional ministry specific brochures with descriptions of the BFGs are located in both lobbies. Second, if you arrive at church and are not sure which BFG to attend, our greeters will be happy to provide you information and escort you to an appropriate BFG. Third, Pastor Blake Ring (bring@naobc.org) oversees the BFG Ministry and he can provide you direction on your BFG options. Fourth, visit the Small Groups tab online @ naobc.org.

### Preschool

Babies A	131	Both
Babies B	122	Both
1 A	135	Both
1 B	133	Both
2 A	136	Both
2 B	134	Both
3 yr. olds	132	Both
4 yr. olds	130	Both

### Children

Kindergarten	236	9:00
1st Grade A	234	9:00
1st Grade B	232	9:00
2nd Grade	230	9:00
3rd Grade A	236	10:30
3rd Grade B	234	10:30
4th Grade A	232	10:30
4th Grade B	230	10:30
5th Grade	212	10:30

### Youth

233/235 10:30

### Singles

College-Age (Braun/Howell)	202	10:30
Singles (Moyes/Faulkner)	202	9:00

### Young Couples (20-35)

YC 1 (Riley/Higdon)	110	9:00
YC 2 (McCollum/Cable)	120	10:30
YC 3 (Pickwick/Smith)	124	9:00
YC 6 (Graham/Robinson)	112	9:00
YC 7 (Cook/Hardy)	100	9:00

### Intermediate Couples (35-50)

IC1 (Amyx/Ring)	110	10:30
IC 2 (Headrick/Roberts)	112	10:30
IC 3 (Cook/Merritt)	118	10:30
IC 4 (Kantorski/Austin)	114	10:30

### Advanced Couples (50-65)

AC 1 (Eldridge/Sims)	118	9:00
AC 2 (Hulon/Elieff)	100	10:30
AC 3 (Sizemore/Cabal)	106	9:00
AC 4 (Maupin/Sanchez)	124	10:30

**Ladies** (Cook/Booth/Bump) 106

10:30

**Mens** (Hinerman) 200 10:30

**Senior Adults** (Buchanan/Sims) 114 9:00

